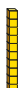


Understand thousandths

- 1 Tommy is using base 10 to represent decimals.

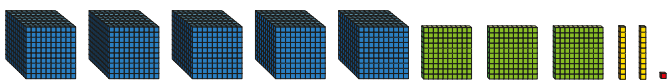
He uses  to represent 1 whole.

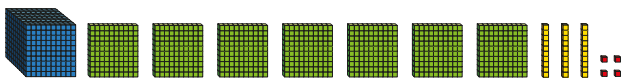
He uses  to represent $\frac{1}{10}$ or 0.1

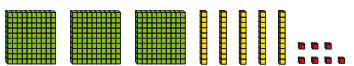
He uses  to represent $\frac{1}{100}$ or 0.01

He uses  to represent $\frac{1}{1000}$ or 0.001

What decimals are represented?

a)  5.321

b)  1.734

c)  0.357



- 2 a) Represent each number using base 10

0.512

1.352

2.003

- b) Use your representations to help you complete the statements.

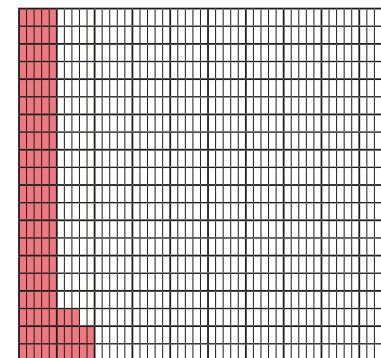
$$0.512 = 0.5 + 0.01 + \boxed{0.002}$$

$$1.352 = 1 + \boxed{0.3} + \boxed{0.05} + \boxed{0.002}$$

$$2.003 = \boxed{2} + \boxed{0.003}$$

- 3 Here is a thousand square.

Part of the square has been coloured.



- a) Why do you think it is called a thousand square?

It's split into a thousand parts.

- b) What fraction of the square has been coloured?

$\frac{32}{1000}$

- c) Write the fraction as a decimal.

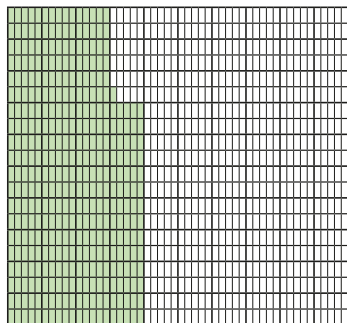
0.032



- 4 What fraction of each square has been shaded?

Write each number as a fraction and as a decimal.

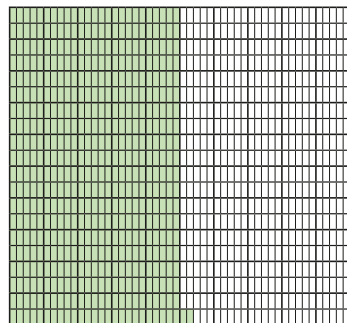
a)



fraction = $\frac{371}{1000}$

decimal = 0.371

b)

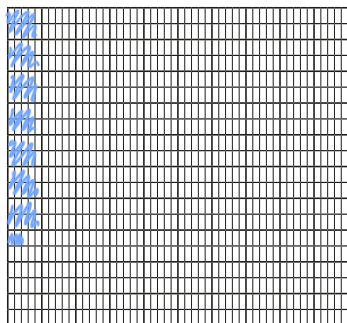


fraction = $\frac{502}{1000}$

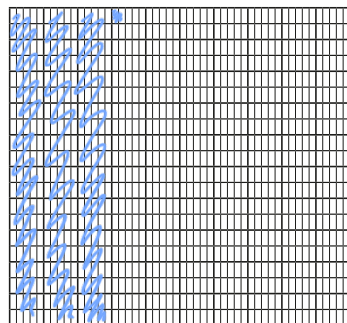
decimal = 0.502

- 5 Colour the grids to represent the fraction and decimal.

a) $\frac{73}{1000}$



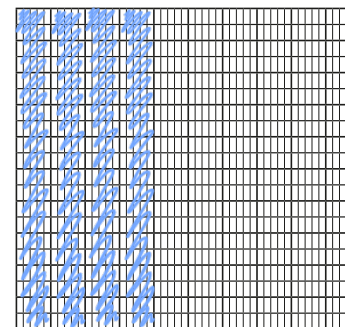
b) 0.302



- 6 Represent these numbers on a place value chart.

a) 1.372 b) 0.091 c) 3.542

- 7 Show that $\frac{400}{1000}$ is the same as 0.4



- 8 Write the numbers represented by the place value charts.

a)

Ones	Tenths	Hundredths	Thousandths
1 1 1 1	0.1 0.1	0.01 0.01 0.01 0.01 0.01 0.01 0.01	0.001 0.001 0.001 0.001 0.001 0.001

4.276

b)

Ones	Tenths	Hundredths	Thousandths
	0.1 0.1 0.1 0.1 0.1		0.001 0.001 0.001 0.001

0.504

